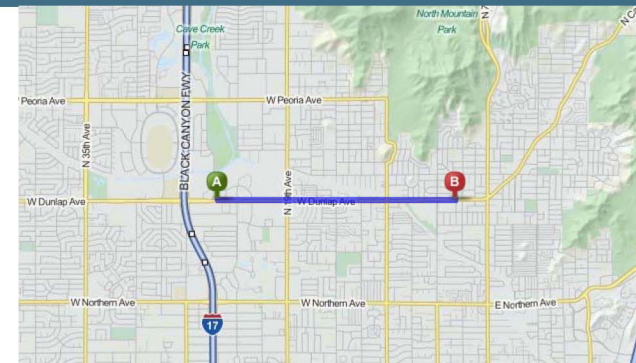


Dunlap Health Center



2423 W Dunlap Ave., Phoenix

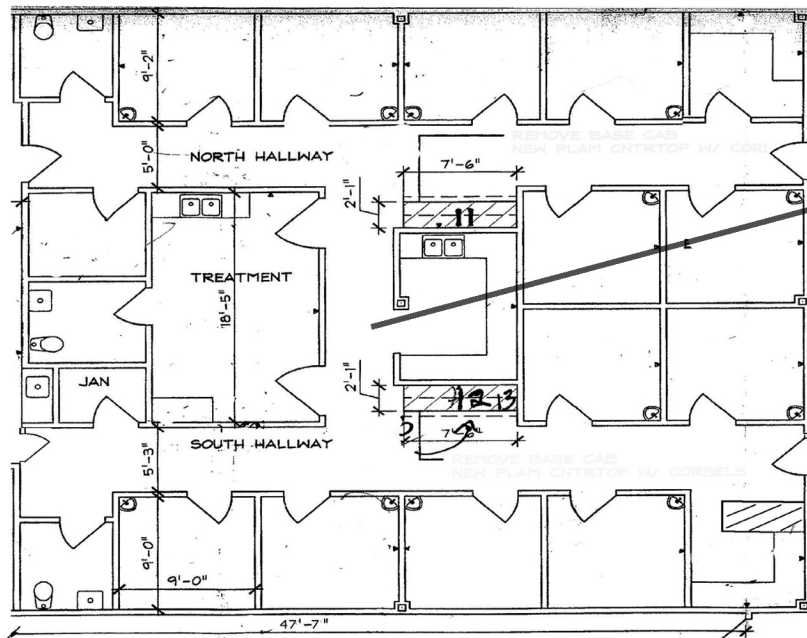
12 exams, treatment room, 2 nurses' stations
Clean build out, ready to go
Just over 2 miles to John C Lincoln Hospital
Abundant parking (6.6/1000), covered parking available
Monument signage available
Excellent visibility on Dunlap Avenue



For additional information, contact: **Barry Rosensteel • PRIN Investments Real Estate Group**

602.840.1003 • Ext. 12 • Barry.Rosensteel@prinreg.com

Dunlap Health Center



4,482 Sq. Ft.

+ optional 850 Sq. Ft.

