

Whitton Place

Office Condominium for Sale or Lease



3610 North 44th Street, Phoenix, Arizona

- Distinctive building located in highly prestigious 44th Street business corridor.
- Vacant office suite of 2,851 sq. ft. available and ready for your improvements
- Includes 5 reserved, covered parking spaces
- Monument signage available
- Plentiful daylight and in-suite water available



For additional information, contact: **Barry Rosensteel**
PRIN Investments Real Estate Group • 602.840.1003
Barry.Rosensteel@prinreg.com

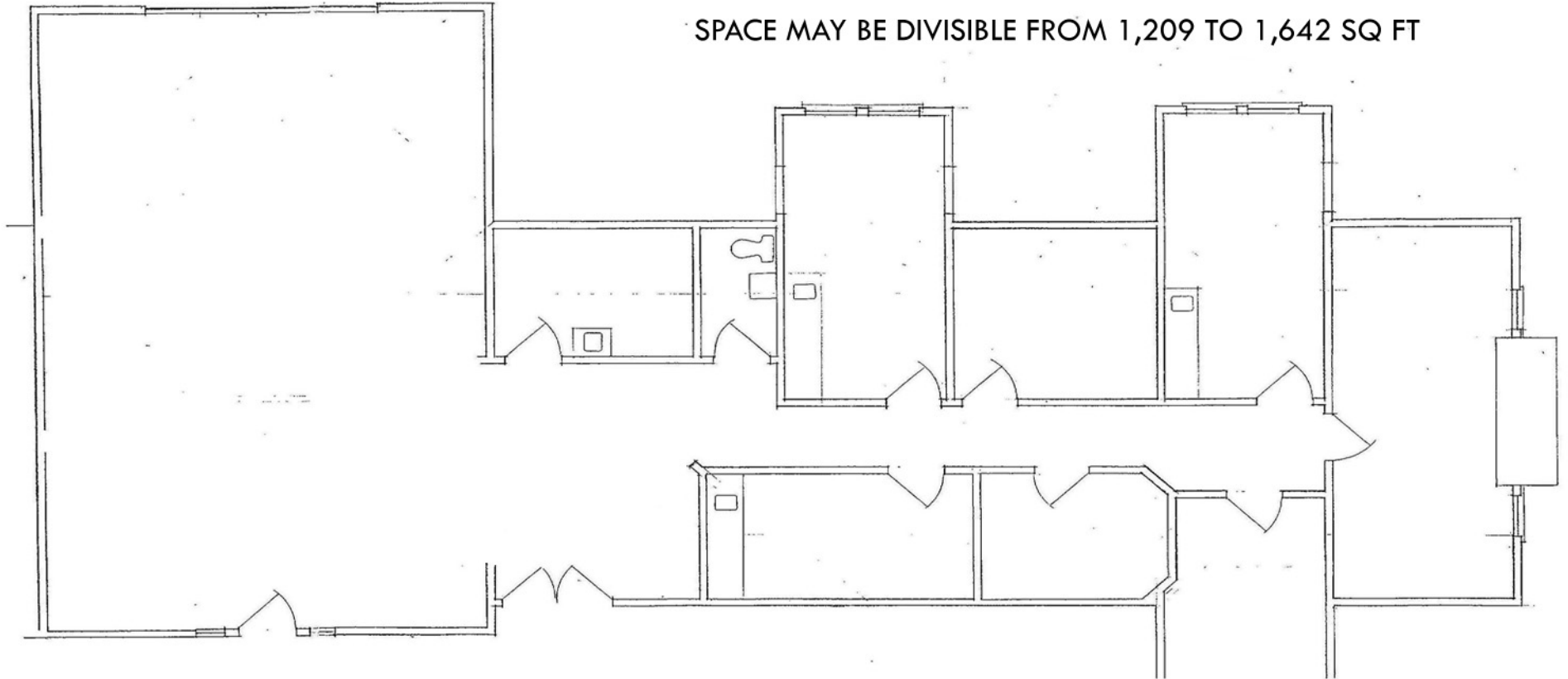
PRIN
INVESTMENTS
Real Estate Group

Whitton Place

3610 North 44th Street, Phoenix, Arizona

SUITE 210 - 2,851 SQ FT

SPACE MAY BE DIVISIBLE FROM 1,209 TO 1,642 SQ FT



PRIN
INVESTMENTS
Real Estate Group

For additional information, contact: **Barry Rosensteel**
PRIN Investments Real Estate Group • 602.840.1003
Barry.Rosensteel@prinreg.com