

# Whitton Place

Office Condominium for Sale or Lease



3610 North 44th Street, Phoenix, Arizona

- Distinctive building located in highly prestigious 44th Street business corridor.
- Vacant office suite of 661 sq. ft. of immediate occupancy.
- Ample surface parking for visitors.
- Located less than 10 minutes from Sky Harbor International Airport, as well as the Esplanade.



**PRIN**  
INVESTMENTS  
Real Estate Group

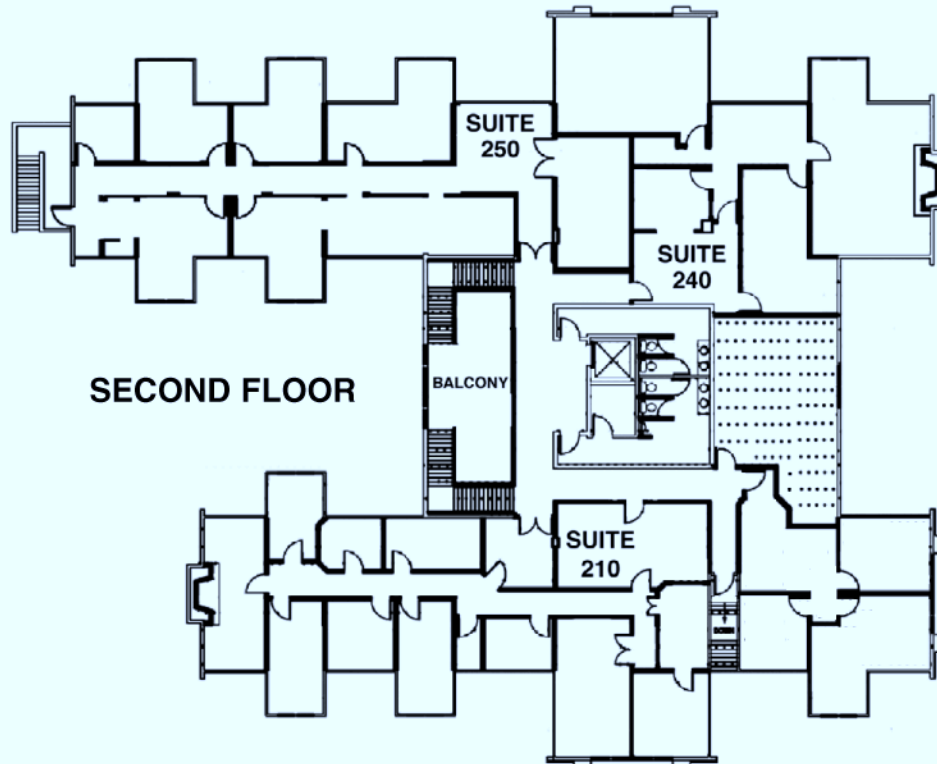
For additional information, contact: **Barry Rosensteel**

**PRIN Investments Real Estate Group • 602.840.1003 Ext 12**

[Barry.Rosensteel@prinreg.com](mailto:Barry.Rosensteel@prinreg.com)

# Whitton Place

3610 North 44th Street, Phoenix, Arizona



## **SUITE 230 - 661 SQ FT**

- \* 2 offices, reception and break area
- \* Beautiful wood flooring



For additional information, contact: **Barry Rosensteel**  
**PRIN Investments Real Estate Group • 602.840.1003**  
Barry.Rosensteel@prinreg.com